

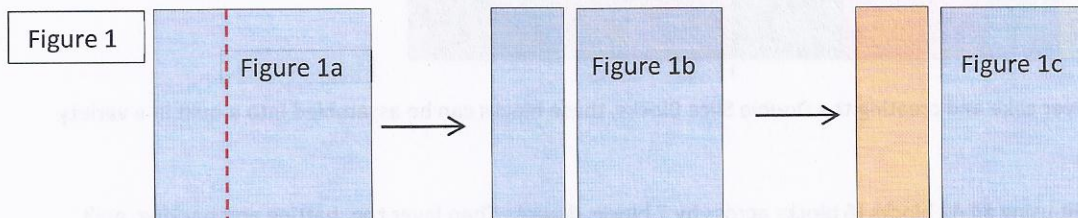
Double Slice Layer Cake Quilt

Video and photo instructions for block technique by Missouri Star Quilt Company:

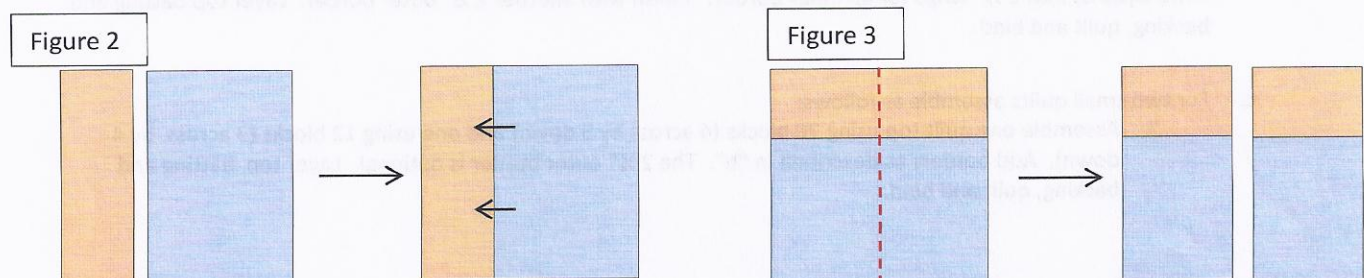
<http://quiltingtutorials.com/all/double-slice-layer-cake-quilt-tutorial/>



1. Quilt #1 plus Quilt #2 were made from one layer cake. Quilt #3 was also made from one layer cake. Since #1 and #2 were made from a baby fabric layer cake, the squares were divided into "boy colors" and "girl colors". (A layer cake is made up of 42 - 10" squares). This also makes a great 10" square exchange quilt.
2. **Cut your entire Layer Cake in half** - creating 2 pieces - a 3 1/2" piece and a 6 1/2" piece of each 10" square (dashed line). As you cut all of the squares, keep them in order. With a sharp rotary cutter you can cut 5-8 squares at one time. Lay your two stacks next to each other. Turn over the 3 1/2" stack so that you will be working from the bottom of that stack. (Fig. 1c)

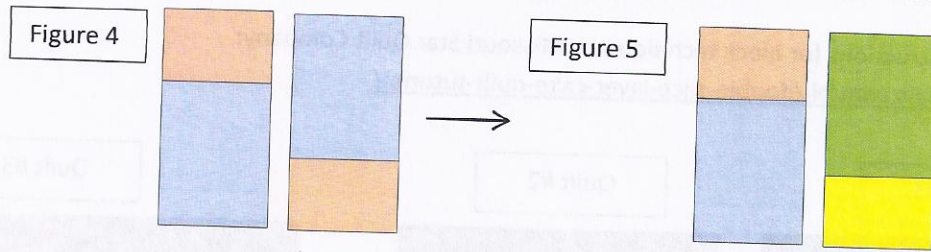


3. Right sides together, with a 1/4" seam, sew a large (6 1/2" piece) to a small (3 1/2" piece). Make sure the pieces are contrasting fabrics. If they aren't just swap with another piece in the stack so that you don't have pieces where the colors blend because they are too close. Chain piecing works well here. Press toward the 3 1/2" piece. (Fig. 2)

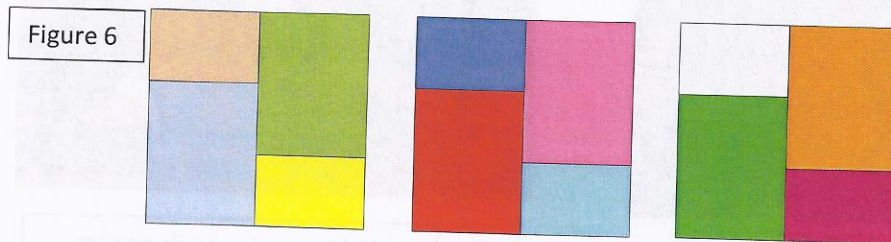


4. Place the newly created block sections in a stack with the seam placed horizontally. The block will measure 10" across and approximately 9 1/2" vertically. Cut each block in half vertically, across the seam, creating two 9 1/2" x 5" stacks. (Fig. 3)

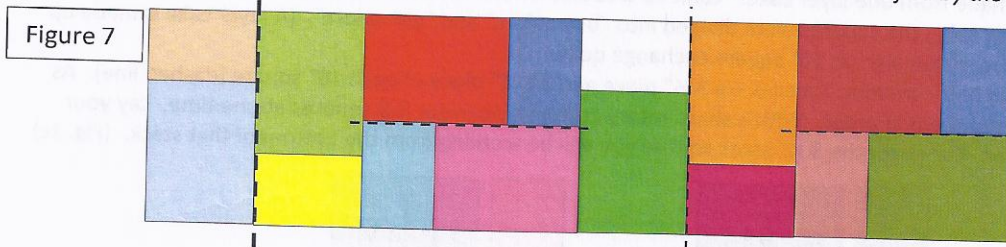
5. Position the two stacks as pictured (Fig. 4) with the small square on the top of the left stack and the bottom of the right stack. Then, turn the left stack over as in Step #2 so that you are again working from the bottom of that stack. (Fig. 5)



6. Sew each stack together as pictured with the smaller piece of the left stack at the top on the left side and the smaller piece of the right stack on the bottom on the right side, creating the block. Chain piece all of the blocks together and press open. (Fig. 6)



7. To assemble the quilt top, alternate a block placed vertically (the long seam going up and down) with a block placed horizontally (the long seam going side to side). (Fig. 7) *Long seam is identified by the dashed black line.



8. Beginning with one layer cake and creating the Double Slice Blocks, these blocks can be assembled into a quilt in a variety of ways:
- One large quilt using all 42 blocks (6 blocks across by 7 blocks down). Then layer top, batting and backing, quilt and bind.
 - One smaller quilt using 35 blocks (5 across by 7 down). Frame the 35 blocks with a 2 1/2" border and then cut the extra squares into 2 1/2" strips for an inner border. Finish with another 2 1/2" outer border. Layer top, batting and backing, quilt and bind.
 - For two small quilts assemble as follows:
 - Assemble one quilt top using 20 blocks (4 across by 5 down) and one using 12 blocks (3 across by 4 down). Add borders as described in "b". The 2 1/2" outer border is optional. Layer top, batting and backing, quilt and bind.